

High Capacity Station (HC5)

Bigbelly's HC5 is a smart, solar-powered, compacting waste or recycling station. This compacting model holds 5x more than the average 30-gallon traditional waste bin and is equipped with sensors that monitor and report fullness levels and collection activity. It harvests solar power to compact waste and communicate its real-time status. The HC5's enclosed hopper (opening) design ensures total waste containment. This model maintains the durable, high quality and design integrity of all Bigbelly smart stations, and can be customized based on waste stream, options, and accessories.



BUILT-IN
COMPACTOR



SOLAR
POWERED



SMART
STATION



FULLNESS
SENSING

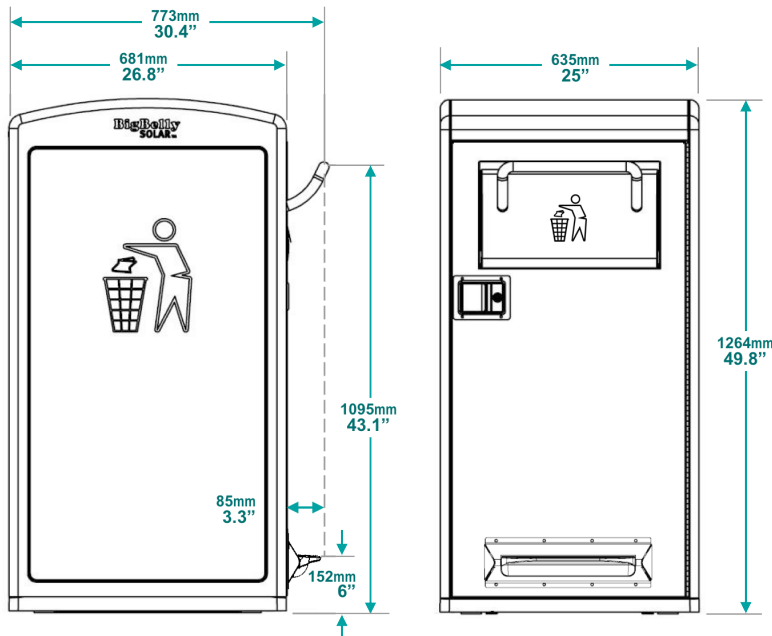


ONBOARD
GPS



CELLULAR
CONNECTION

Technical Specifications



Overall Machine Dimensions

- Height: 49.8" (1264 mm)
- Width: 25" (635 mm)
- Depth: 26.8" (681 mm)
- Handle Height (ADA Compliant): 43.1" (1095 mm)
- Weight: 270 lbs (122 kg)
- Shipping weight: 300 lbs (136.08 kg)
- Hopper Opening: 6" x 17" (152 mm x 432 mm)
- Bin Volume: 33 gallons (125 L) compacted trash; approx. 150 gallons (568 L) uncompacted trash.
- Bin Dimension: 24" x 20.4" x 21.65" (609 mm x 518 mm x 549 mm)

Waste Streams: Mixed Waste Trash, Single Stream Recycling, or Compost (with appropriate markings).

Options: Diagram to left shown with Foot Pedal.
See options and accessories on next page.

High Capacity Station (HC5)

*Smart, Solar-Powered,
Compacting Model
(150 Gal / 570 L)*



www.bigbelly.com | info@bigbelly.com
+1-781-444-6002 | © 2017 Bigbelly, Inc.

High Capacity Station (HC5)

Smart, Solar-Powered,
Compacting Model
(150 Gal / 570 L)



www.bigbelly.com | info@bigbelly.com
+1-781-444-6002 | © 2017 Bigbelly, Inc.

Technical Specifications -Continued

HC5 Features

- Unique built-in compaction technology with up to 5-to-1 compaction ratio
- Fully automated, microprocessor controlled system senses fullness and machine status
- Embedded sensors measure station fullness level (IR sensor) and collection activity
- LED status lamps indicate compacted trash level, machine status and error codes
- 3G GSM or 4G LTE wireless data link for remote monitoring and management
- GPS assisted location service

Safety Features

- CE approved
- Fully interlocked access doors protect users and service personnel
- Locked front trash removal door.
- Separately keyed service access
- Fault-tolerant design for hopper insertion door prevents access to compaction area

Durability

- Weather resistant, UV stabilized polyester powder-coat finish on all exterior parts
- Electronic components temperature range of -40°F to +185°F (-40°C to +85°C)
- Fully weatherized, but in the event of a flood, HC5 can withstand:
 - Up to 20" (508 mm) of water without harming the electronics
 - Up to 36" (915 mm) of water with only minor damage to electronics

Opening (Hopper) Options

PLEASE NOTE: Green Hoppers, Faceplates or Flaps require additional 6 weeks to process.



Materials

- RoHS compliant
- Galvanized sheet metal steel interior and exterior construction
- Heavy duty plastic side panels for dent and scratch resistance (recycled content)
- Interior Bin: Leak proof; made of low density polyethylene (LDPE) plastic

Power & Electronics

- Polycrystalline silicon cell PV module (22 watts)
 - 40 watts HE (high energy) upgrade available
- PV panel protected by polycarbonate bubble
- Spill-proof, sealed maintenance-free battery
- Self-powered unit requires no wiring

Options & Accessories

- Foot Pedal for Hands-Free Use
- Wheeled Interior Lift Bin (Bar & Comb Styles)
- Graphic Wraps, Message Panels, Stickers
- Ashtray and Stub-out Plates
- Security System with Physical Plates
- External A/C Adapter for Indoor Use
- Standalone Wi-Fi Hotspot Upgrade Option

Standard Capacity Station (SC5.5)

Bigbelly's SC5.5 is a smart, fullness-sensing waste station. This non-compacting model is equipped with sensors that monitor and report fullness levels and collection activity. It is battery powered to communicate its real-time status. The SC5.5 has an enclosed flap option for total waste containment. It is ideally placed in lower waste volume areas, among a fleet of customized station configurations. This model maintains the durable, high quality and design integrity of all Bigbelly smart stations, and can be customized based on waste stream, options, and accessories.



50 GALLON
CAPACITY



BATTERY
POWERED



SMART
STATION



FULLNESS
SENSING

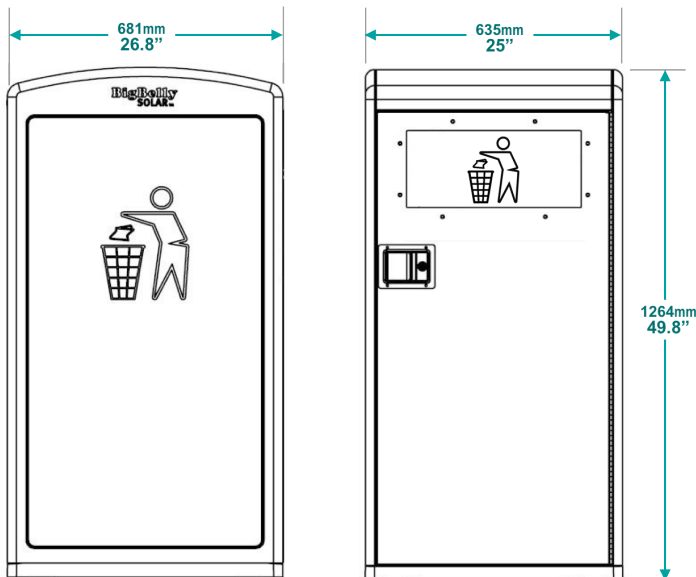


ONBOARD
GPS



CELLULAR
CONNECTION

Technical Specifications



Overall Machine Dimensions

- Height: 49.8" (1264 mm)
- Width: 25" (635 mm)
- Depth: 26.8" (681 mm)
- Handle Height (ADA Compliant): 43.1" (1095 mm)
- Weight: 150 lbs (68 kg)
- Shipping weight: 180 lbs (82 kg)
- Insertion Opening: Can be configured for variety of recycling / waste streams.
- Bin Volume: 50 gallons (189 L)
- Bin Dimension: 25" x 20" x 32.25" (635 mm x 508 mm x 819 mm)

Waste Streams: Mixed Waste Trash, Single Stream / Paper / Bottles & Cans Recycling, or Compost / Organics (with appropriate markings).

Options: See options and accessories on next page.

Standard Capacity Station (HC5)

*Smart, Battery-Powered,
Non-Compacting Model
(50 Gal / 190 L)*



Bigbelly
SMART CITY SOLUTIONS

www.bigbelly.com | info@bigbelly.com
+1-781-444-6002 | © 2017 Bigbelly, Inc.

Standard Capacity Station (HC5)

Smart, Battery-Powered,
Non-Compacting Model
(50 Gal / 190 L)



www.bigbelly.com | info@bigbelly.com
+1-781-444-6002 | © 2017 Bigbelly, Inc.

Technical Specifications -Continued

SC5.5 Features

- Fully automated, microprocessor controlled system senses fullness and machine status
- Embedded sensors measure station fullness level (ultrasonic sensor) and collection activity
- 3G GSM or 4G LTE wireless data link for remote monitoring and management
- GPS assisted location service
- 'Companion' model is also available to couple with either an HC5 or SC5.5 'Hub'
 - Note: Companion models use the power and communication source of their attached hub

Safety Features

- CE approved
- Locked front door accessed via key by collection and service personnel

Durability

- Weather resistant, UV stabilized polyester powder-coat finish on all exterior metal parts
- Electronic components temperature range of -40°F to +185°F (-40°C to +85°C)
- Fully weatherized, but in the event of a flood, the component can withstand up to 40" (1.06 m) of water without harming electronics

Opening Options

Flap Options



Faceplate Options



PLEASE NOTE: Green Hoppers, Faceplates or Flaps require additional 6 weeks to process.

Materials

- RoHS compliant
- Galvanized sheet metal steel interior and exterior construction
- Heavy duty plastic side panels and top for dent and scratch resistance (recycled content)
- Interior Bin: Leak proof; made of low density polyethylene (LDPE) plastic

Power & Electronics

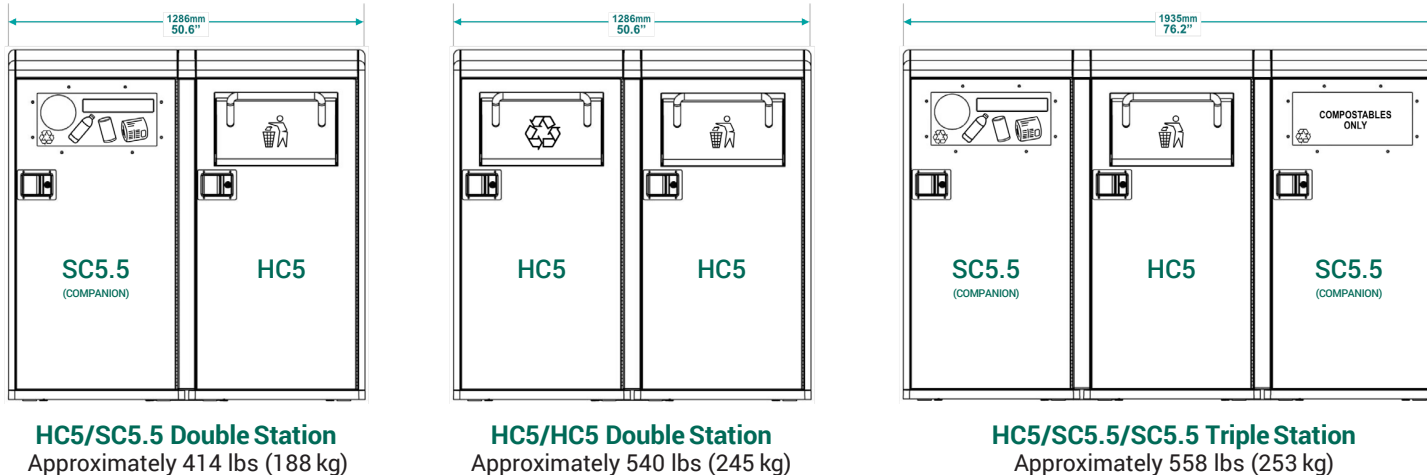
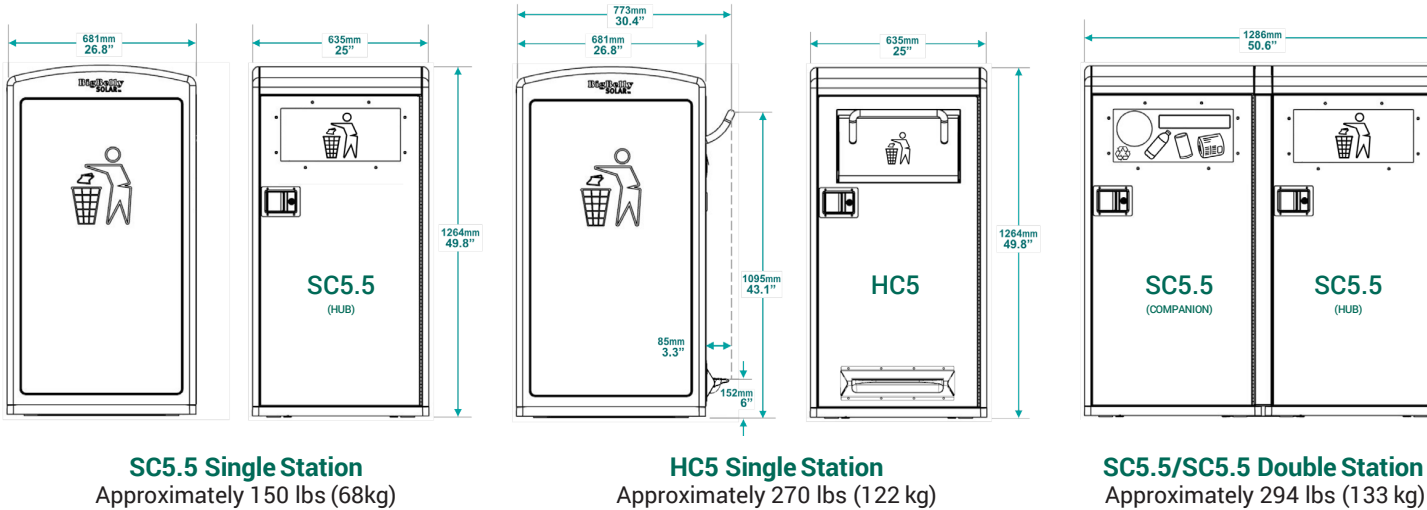
- Single-use Alkaline battery pack
- Battery life: Up to 8 years
- Self-powered unit requires no wiring
- Cordless operation for both indoor / outdoor use

Options & Accessories

- Graphic Wraps, Message Panels, Stickers
- Security System with Physical Plates

Multi-Stream Configurations

Stations are modular and support any combination of waste streams at each location as **Single, Double, and Triple** station configurations. A fleet may be comprised of a variety of stations in order to meet the unique needs of each area. Customize each station by selecting components' **capacity** (HC5 or SC5.5) and **waste stream** (Trash, Single Stream / Paper / Bottles & Cans Recycling, or Compost/Organics; see next page for available streams per model).



Multi-Stream Configurations

*Mix & Match for
Station Capacity
and Waste Stream*



Bigbelly
SMART CITY SOLUTIONS

www.bigbelly.com | info@bigbelly.com
+1-781-444-6002 | © 2017 Bigbelly, Inc.

Multi-Stream Configurations

Mix & Match for
Station Capacity
and Waste Stream



www.bigbelly.com | info@bigbelly.com
+1-781-444-6002 | © 2017 Bigbelly, Inc.

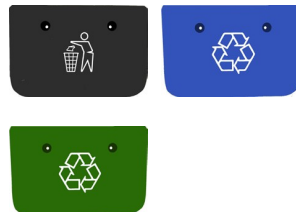
Technical Specifications

	High Capacity Station (HC5)	Standard Capacity Station (SC5.5) Hub	Standard Capacity Station (SC5.5) Companion
Overall Dimensions	<i>Smart, Solar-Powered, Compacting Model</i>	<i>Smart, Self-Powered, Non-Compacting Model</i>	<i>Smart, Self-Powered, Non-Compacting Model</i>
Height	49.8" (1264 mm)	49.8" (1264 mm)	49.8" (1264 mm)
Width	25" (635 mm)	25" (635 mm)	25.6" (635 mm)
Depth	26.8" (681 mm)	26.8" (681 mm)	26.8" (681 mm)
Handle Height	43.1" (1095 mm)	-	-
Weight	270 lb (122 kg)	150 lb (68 kg)	144 lb (65 kg)
Shipping Weight	300 lb (136 kg)	180 lb (82 kg)	176 lb (80 kg)
Battery Voltage	12V	4.5V	-
Insertion Opening	6" x 17" (15.2 cm x 43.2 cm)	Can be configured for multiple recycling or waste streams.	Can be configured for multiple recycling or waste streams.
Bin Volume	33 gallons (125 L) compacted; 150 gallons uncompactd	50 gallons (189 L)	50 gallons (189 L)
Liner Bags	Custom High Capacity Liner Bags (#BBS-CB4647 or #BBS-RCB4647) are available for purchase. <i>The black or clear bags are 47"H x 46"W (120cm x 117cm) and 2.5mil (64μ) thick.</i>	Custom Standard Capacity Liner Bags (#BBS-RB4255) are available for purchase. <i>The clear bags are 55"H x 42.5"W (140cm x 108cm) and 1.25mil (32μ) thick.</i>	Custom Standard Capacity Liner Bags (#BBS-RB4255) are available for purchase. <i>The clear bags are 55"H x 42.5"W (140cm x 108cm) and 1.25mil (32μ) thick.</i>

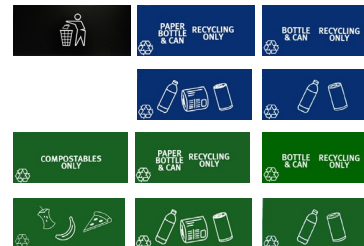
Liner Bags are available from Bigbelly's official provider, WasteZero. Contact WasteZero to order liner bags at +1.800.866.3954 or www.WasteZero.com/Bigbelly/.

Opening Options

Hopper (HC5)



Flap (SC5.5)



Faceplate (SC5.5)



PLEASE NOTE: Green Hoppers,
Faceplates or Flaps require
additional 6 weeks to process.